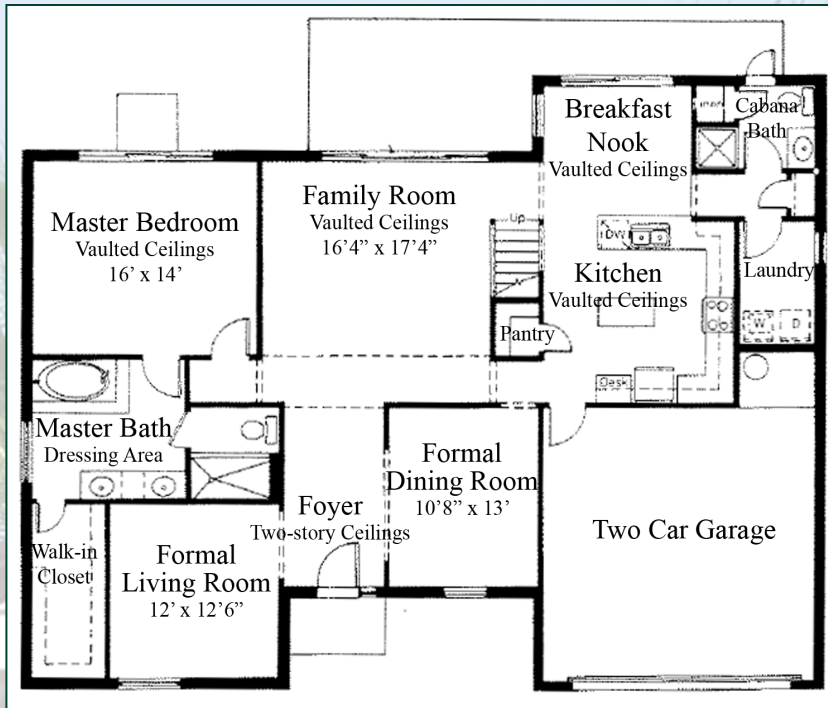


# Hunt Club

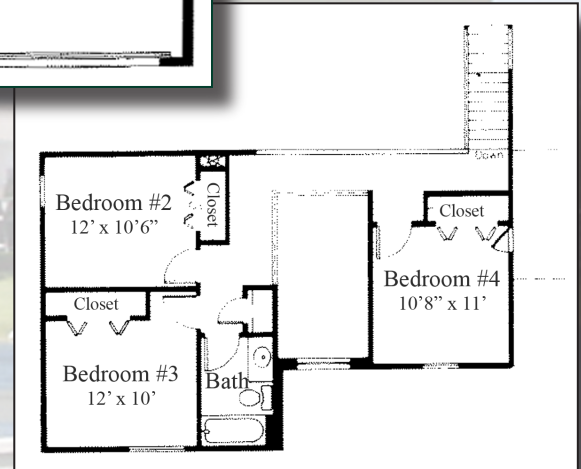
1008 Pine Lake Circle

## Floor Plan



### First Floor

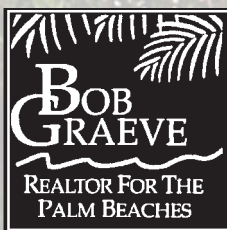
- » 2,394 AC Sq. Ft.
- » 3,110 Total Sq. Ft.
- » Built in 1991
- » 2005 Taxes: \$4265
- » Family Room
- » Formal Dining Room
- » Gated Community
- » HOA Fee: \$80/month



### Second Floor

Illustrated  
Properties  
Real Estate, Inc.

FOR MORE INFORMATION ON THIS OR OTHER  
COMPARABLE PALM BEACH GARDENS  
PROPERTIES, CALL BOB TODAY.



Robert Graeve, P.A., CRS  
Certified Residential Specialist  
Illustrated Properties Real Estate, Inc.

561-758-8571

[bobgraeve@realtor.com](mailto:bobgraeve@realtor.com)

[www.bobgraeve.com](http://www.bobgraeve.com) (virtual tours)

[www.PalmBeachCountyRealEstate.com](http://www.PalmBeachCountyRealEstate.com)

