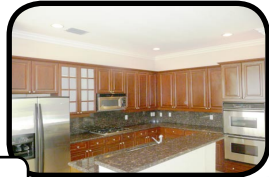


Wonderful 5 Bedroom Pool Home!!

CBS CONSTRUCTION, 2 STORY, 3 CAR GARAGE

**Custom Kitchen with Granite Counters,
SS Appliances & 42" Wood Cabinets.**

- √ LIV SQ. FT. 3,060
- √ TOT SQ. FT. 3,938
- √ YEAR BUILT: 2005
- √ 5BR/3BA/3CG
- √ 2008 TAXES: \$8,936
- √ HOA: \$1,099/QTR.



CRS



REALTOR®

**ILLUSTRATED
PROPERTIES**

Websites:

BobGraeve.com
PalmBeachCountyRealEstate.com
BobGraeve.Realtor.com

If you've
thought of
selling please
call **Today** for
a confidential
consultation.



Robert Graeve, P.A., CRS
Certified Residential Specialist
Illustrated Properties Real Estate, Inc.

561-758-8571

bobgraeve@realtor.com

www.BobGraeve.com (virtual tours)

If your home is already listed with
another broker, please disregard.
This is not intended to be a solicitation.

Postcard Design 2009- WWW.DELRAYCOMPUTER.COM

Illustrated Properties Real Estate, Inc.
2725 PGA Blvd.
Palm Beach Gardens, FL 33410

