

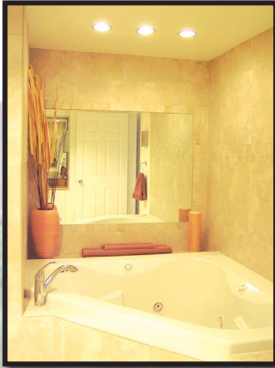
# Old Port Cove

## Harbor Village

**WATERFRONT**  
**3BR/3BA!!**

**1140 Marine Way**  
**#F-3R**  
NORTH PALM BEACH, FL

**\$499,000**



- » 2,379/2,706 SF
- » 3 Bedroom/3 Bath + Family Room
- » Unit Includes Dock for Up To 40' Boat
- » Ceramic Tile, Parquet Floors
- » Pets OK, with Restrictions
- » Community Pool & Spa
- » 2 Mile Health Walk
- » Manned Gate
- » Yacht Club

**Illustrated Properties**  
Real Estate, Inc.  

FOR MORE INFORMATION ON THIS OR OTHER COMPARABLE NORTH PALM BEACH PROPERTIES,  
CALL BARBARA OR BOB TODAY.

SOPHISTICATED DECOR, EXTRAORDINARY WATER VIEWS, INTRACOASTAL ACCESS,  
BOAT DOCK, FULLY REMODELED WITH PORCELAIN TILE, GRANITE, JACUZZI TUB,  
STAINLESS STEEL APPLIANCES, SHUTTERS. MOVE IN NOW! GREAT LOCATION, NPB  
NICKLAUS GOLF COURSE, PGA CORRIDOR SHOPPING, RESTAURANTS, BEACHES!



Barbara Cohen, REALTOR®  
Illustrated Properties Real Estate, Inc.  
**561-310-8095**  
[pbhomes@comcast.net](mailto:pbhomes@comcast.net)



Robert Graeve, P.A., CRS  
Certified Residential Specialist  
Illustrated Properties Real Estate, Inc.  
**561-758-8571**  
[bobgraeve@realtor.com](mailto:bobgraeve@realtor.com)  
[www.bobgraeve.com](http://www.bobgraeve.com) (virtual tours)  
[www.PalmBeachCountyRealEstate.com](http://www.PalmBeachCountyRealEstate.com)