

Bay Hill Estates

BAY HILL IS HOME OF THE PGA ESTATES COURSE AND OFFERS SPECIAL INCENTIVE PACKAGES TO BAY HILL RESIDENTS INCLUDING FULL GOLF, SPORTS, TENNIS AND SOCIAL MEMBERSHIP.



BACK OF HOME



OPEN PATIO



PLAY AREA



SCREENED PATIO

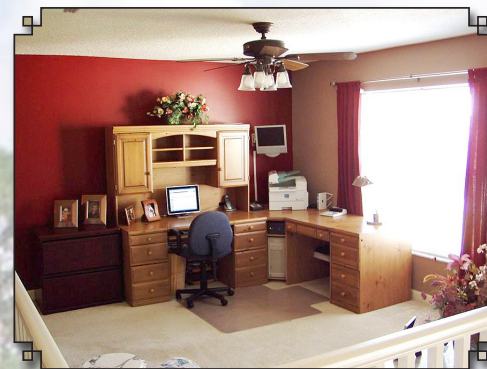


HUGE YARD

COMMUNITY FEATURES INCLUDE 24 HOUR MANNED GATEHOUSE, NATURE/ BIKE PATHS, CLUBHOUSE, PGA GOLF COURSE, SPA/JACUZZI SPACIOUS LUXURY HOME WITH CENTRAL AC, ALARM, TRAVERTINE, WOOD AND CARPETED FLOORS, LARGE PATIO & SCREENED PARCH ALL ON A GORGEOUS 1 ACRE CORNER LOT WITH LUSH FLORIDA LANDSCAPING.

- > **5BR/3.5BA/3CG**
- > **YEAR BUILT: 1997**
- > **3,717 AC SQ. FT.**
- > **5,140 TOTAL SQ. FT.**
- > **2006 TAXES: \$6,700**
- > **HOA FEE: \$485/QTR.**
- > **2-STORY CBS HOME**
- > **1-ACRE LOT**

UPGRADES INCLUDE NEW STAINLESS APPLIANCES, COORDINATED STAINLESS DOOR KNOBS & PULLS, MATCHING KOHLER SINK, CORIAN COUNTERS & A SLATE BACK SPLASH, CROWN MOLDING, BRUSHED NICKEL FAUCETS & KNOBS IN EVERY BATH & NEW WINDOW TREATMENTS. EVERYTHING INSIDE & OUT HAS BEEN FRESHLY PAINTED AND THE OVERSIZED CIRCULAR DRIVEWAY & PATIO HAVE BEEN PROFESSIONALLY RESURFACED.



LOFT/OFFICE



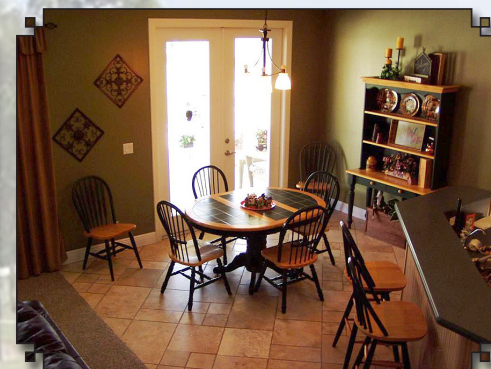
MASTER BEDROOM



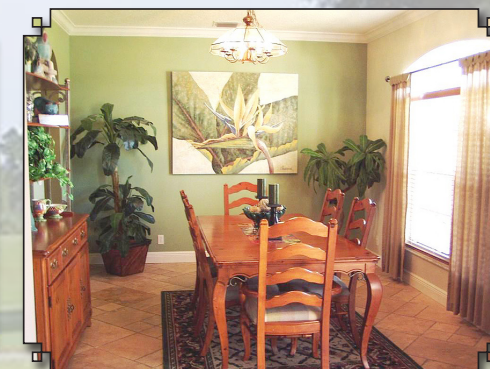
POOL ROOM



BATHROOM



DINING AREA



FORMAL DINING ROOM

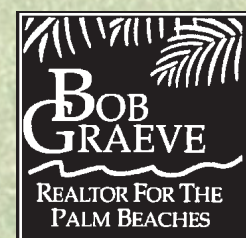
MASTER BEDROOM FEATURES BEAUTIFUL 2ND STORY VIEWS, HIS AND HERS WALK IN CLOSETS, DOUBLE VANITIES AND A ROMAN TUB. OVERSIZED LOFT CAN BE USED AS A MEDIA ROOM OR PLAYROOM. OVERSIZED 3 CAR GARAGE WITH LARGE WORK BENCHES.



CUSTOM KITCHEN



LIVING ROOM



ILLUSTRATED
PROPERTIES

8828 Marlamoore