

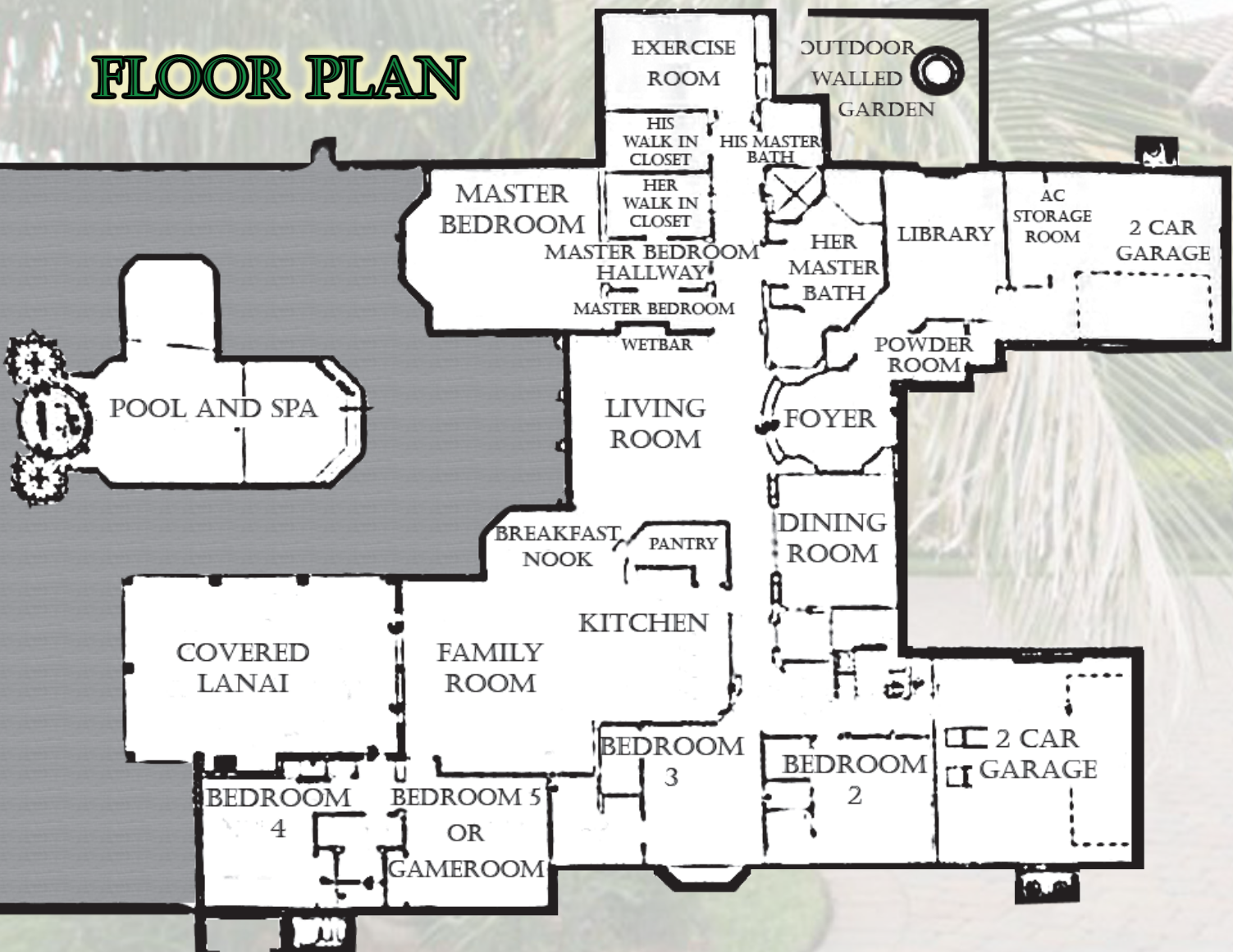


# Bay Hill Estates



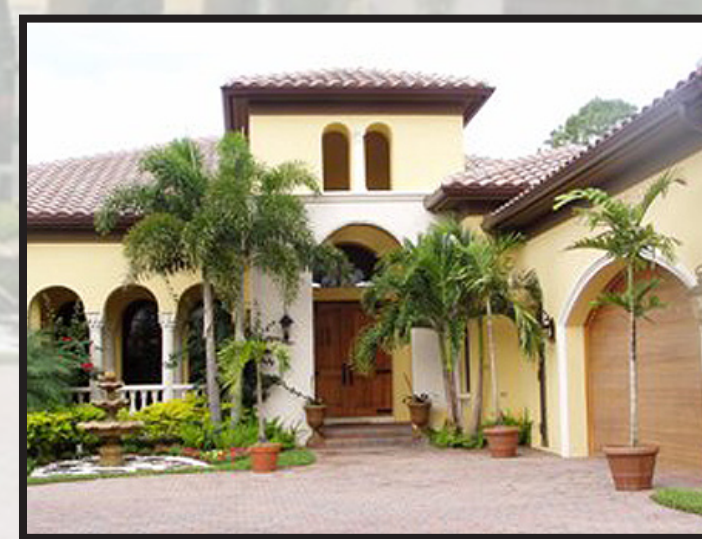
•5,686 TOTAL SQ. FT. • BUILT IN 2002 • WATERFRONT • HOA FEE'S \$450/QTR. •

## FLOOR PLAN



## 11583 BUCKHAVEN LANE

UNBELIEVABLE CUSTOM MEDITERRANEAN ESTATE HOME WITH ALL THE BELLS & WHISTLES. BREATHTAKING GOLF & WATER VIEWS. BUILT IN SPEAKERS & CROWN MOULDINGS IN MOST ROOMS. HAND PAINTED MURAL, COFFERED CEILINGS, PRE-CAST STONE FIREPLACE, TOP OF THE LINE HARDWARE, PLUMBING FIXTURES, APPLIANCES, HAND PAINTED DOMED FOYER CEILING, IMPACT RESISTANT WINDOWS & DOORS, THE LIST GOES ON.

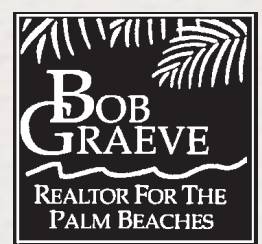


•\$1,849,000•

•5BR/5½BA/4CG•

•1.13 ACRES•

**\$1,849,000**



Robert Graeve, P.A., CRS  
 Certified Residential Specialist  
 Illustrated Properties Real Estate, Inc.  
**561-758-8571**  
[bobgraeve@realtor.com](mailto:bobgraeve@realtor.com)  
[www.BobGraeve.com](http://www.BobGraeve.com) (virtual tours)  
[www.PalmBeachCountyRealEstate.com](http://www.PalmBeachCountyRealEstate.com)

