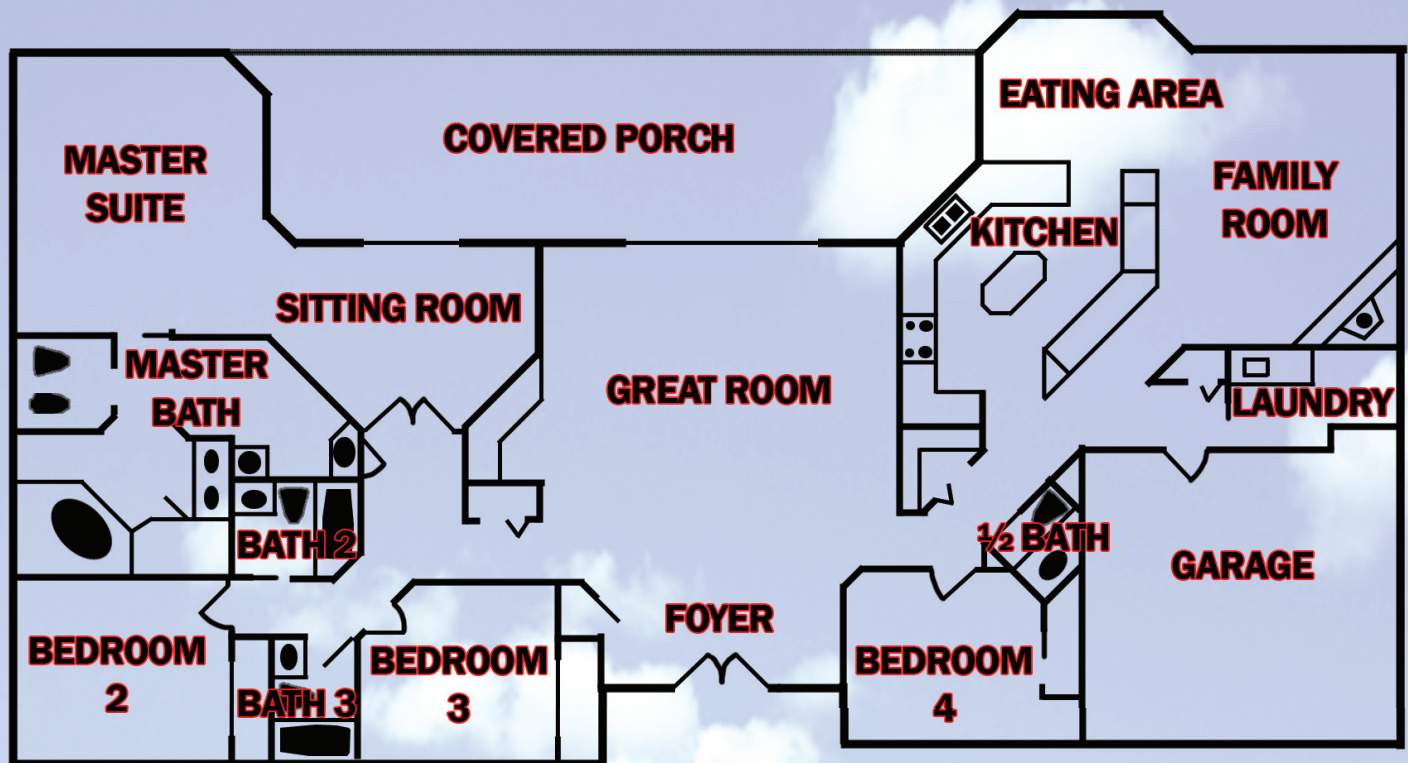


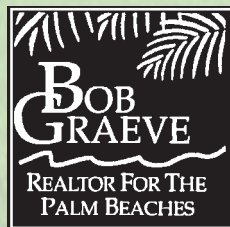
# PALM BEACH COUNTRY ESTATES

15304 84TH AVE. N.

## FLOOR PLAN



**COVERED PORTICO**



Robert Graeve, P.A., CRS  
Certified Residential Specialist  
Illustrated Properties Real Estate, Inc.

561-758-8571

[bobgraeve@realtor.com](mailto:bobgraeve@realtor.com)

[www.BobGraeve.com](http://www.BobGraeve.com) (virtual tours)

[www.PalmBeachCountyRealEstate.com](http://www.PalmBeachCountyRealEstate.com)



Illustrated  
Properties  
Real Estate, Inc